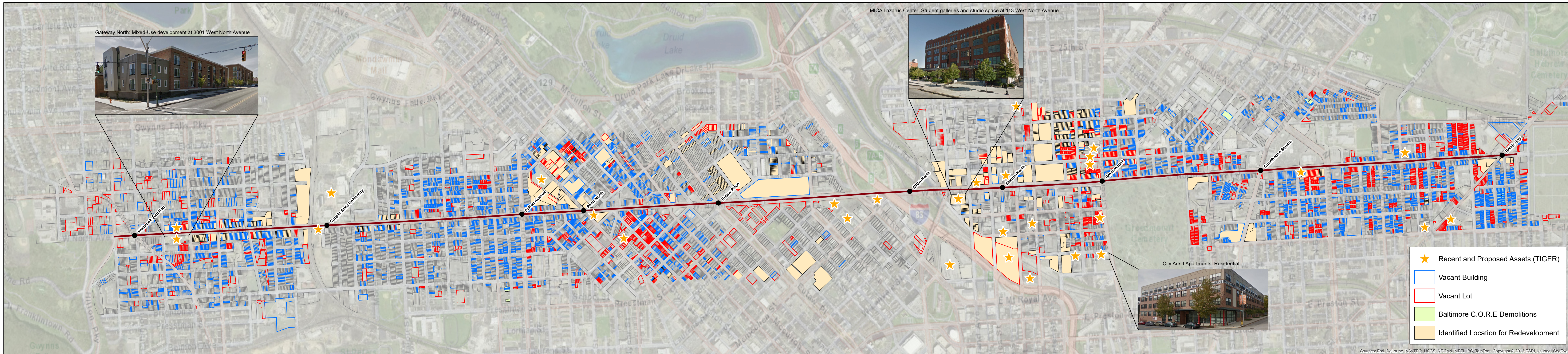


North Avenue Rising: Redevelopment Potential Reference Map



- ★ Recent and Proposed Assets (TIGER)
- Vacant Building
- Vacant Lot
- Baltimore C.O.R.E. Demolitions
- Identified Location for Redevelopment

Source: Recent and proposed assets identified in the North Avenue Rising Application, various neighborhood and Baltimore City planning documents and 2017 Baltimore C.O.R.E. Data, Baltimore City

Sources: Esri, DeLorme, NAVTEQ, USGS, NRCAN, METI, IPC, TomTom, Copyright © 2013 ESRI, i-cubed, GeoEye

